

Emergency Procedure

What to do if your camping or caravan equipment comes into contact with an overhead line:

- Assume the line / wires are alive, even if they are not sparking.
- Remember that, even if they are dead, the wires can become alive again with no notice. This may happen automatically after a few seconds, or may be re-energised remotely up to several hours later if SSEPD is not aware that the line has been damaged.
- If you can, use your mobile telephone to call the emergency services. Give them your location as accurately as you can. Tell them that there are electricity wires involved and ask them to inform SSEPD.
- If your caravan, tent or mobile home is in contact with an electricity wire or close to a damaged overhead wire then move away as quickly as you can, and stay away, until the emergency services or SSEPD arrive.
- Once a wire is on the ground you do not have to touch it to be killed. The current may travel a significant distance through the ground and even further if the wire has fallen on a fence or other metallic objects. Keep well clear.
- If someone is in a caravan or mobile home that is in contact with a line, it is best for them to remain inside. Keep everyone else clear.
- If staying inside the caravan or mobile home would put you in serious danger (for example – if it is on fire) and you have to get out, then always jump well clear rather than stepping out before moving away as quickly as you can. Make sure you do not touch the mobile home / caravan and the ground at the same time.

Emergency Procedure continued

- Never touch a tent, or awning, frame or caravan, or any post or fence that you suspect might be touching an electricity line – even if you think the line is dead.
- The emergency services have been briefed on how to undertake rescues in proximity of damaged overhead lines. An SSEPD engineer will confirm when the power has been turned off and the rescue can proceed safely.
- Do not allow anyone to approach the tent, caravan or mobile home until it is confirmed safe to do so by an SSEPD engineer.

Emergency Contact

In an emergency, call the appropriate number below:

North of Scotland 0800 300 999

Central Southern England 08000 72 72 82

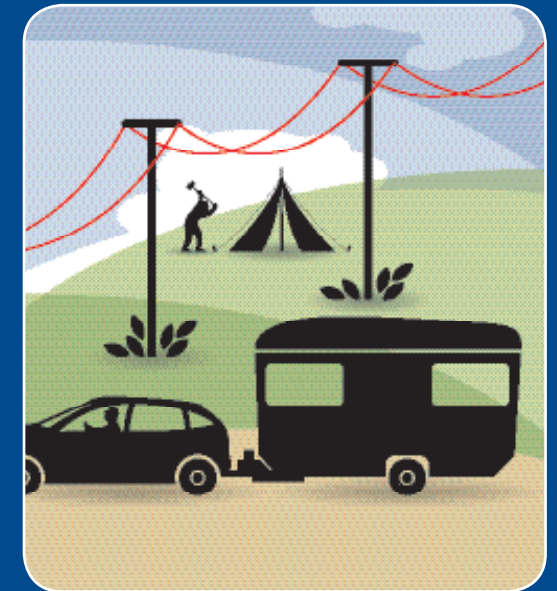
SSE Power Distribution Ltd
Inveralmond House
200 Dunkeld Road
Perth PH1 3AQ

Web: www.ssepd.co.uk
Registered in Scotland 213459

Stock Code 007670

SAFETY INFORMATION ON CARAVANNING AND CAMPING

Keep safe from Electricity Overhead Lines



Introduction

There are electricity overhead power lines criss-crossing the countryside. Often unnoticed, they are essential to provide electricity to the cities, towns, villages and rural communities. The overhead lines carry voltages ranging from 230 volts (domestic voltage) up to 400,000 volts. Even domestic voltages can be fatal, and high voltage electricity can jump large gaps.

This leaflet is aimed at anyone who takes part in camping and caravanning activities. It is designed to provide information to help people stay safe while camping and caravanning in the vicinity of overhead electricity lines.

Some general key points

- Electricity systems carry voltages up to 400,000 volts. Even 230 volts (domestic voltage) can be lethal.
- Never assume that any overhead wires are dead, even if they are broken or fallen to the ground.
- Remember that the power can be switched back on at any time, without warning.
- Touching electricity wires or objects / persons in contact with the wires can be fatal.
- Even the lowest voltage overhead lines can produce 10,000 times more current than is required to kill a person.
- Electricity can jump gaps.
- Metal and carbon fibre tent poles, guy lines, TV aerial poles and almost every other long object can conduct electricity.
- Rubber boots will not protect you.
- Most overhead electricity wires are not insulated.

What are the risks to you?

Overhead electricity lines are erected above a statutory minimum height that, in normal circumstances, places them safely out of reach.

How could this happen?

In recent years, several people have been injured or killed when erecting tents or moving long objects around caravan sites. This happened because they inadvertently came into contact with live high voltage overhead lines.

Before setting up camp, it is important that you:

Look out, and look up!

Avoid, if at all possible, pitching your tent or caravan directly under or close to an overhead power line.

Be particularly aware when erecting TV aerials or radio masts next to mobile homes or fixed caravans.

If there are any lines in the vicinity of the campsite you are intending to use, stay well away from the lines. It is very difficult to judge the height of lines, so do not attempt to do so.

If walking below overhead lines never carry long objects (metal poles, fishing rods or yacht masts etc.) vertically. Always carry them horizontally and parallel with the ground.

Never attach or tie anything to power line wood poles, pylons or electrical equipment.

Never light a fire under an overhead line, the heat from the fire could cause the wires to sag dangerously low or break.

Look for the signs

- Electricity poles and pylons are usually fitted with yellow "Danger of Death" notices. There should also be warning signs near to any electricity lines.
- Site specific information and posters may be available from the camping and caravan park reception.
- Take note of any warning signs and stay well away from the marked area. Occasionally signs get knocked over or vandalised – so always check for overhead lines yourself.
- Don't forget - look up and around you.

If in doubt – STOP!

- If there are lines near where you are setting up your tent, awning or caravan; stay away from them.
- It is dangerous to dismiss the line as merely a telephone wire – it is very difficult to tell telephone and electricity wires apart.
- Always assume that all overhead lines carry live electricity, and are dangerous.
- If you have any doubt – contact SSE Power Distribution (SSEPD) or the site owner, who, if they are not sure, should contact SSEPD themselves.

Camping and Caravan Park Owners

You have a responsibility to ensure that public using your facilities are warned of any dangers that may exist. You should make sure that signs highlighting the dangers are in place and maintained.

If you are in any doubt or if you require further advice contact SSEPD or refer to the Health and Safety Executives Guidance GS6 "Avoidance of Danger from Overhead Electrical Lines".